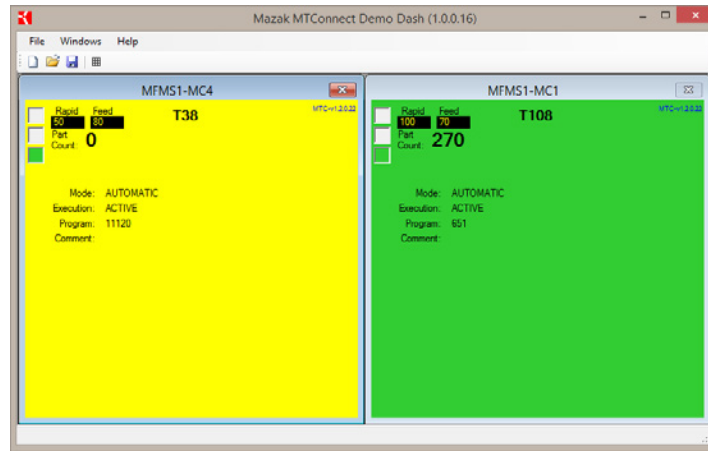


Sample **MTConnect**[®] Dashboard
Monitor up to TWO (2) machines for free

DISCOVER MORE WITH
Mazak



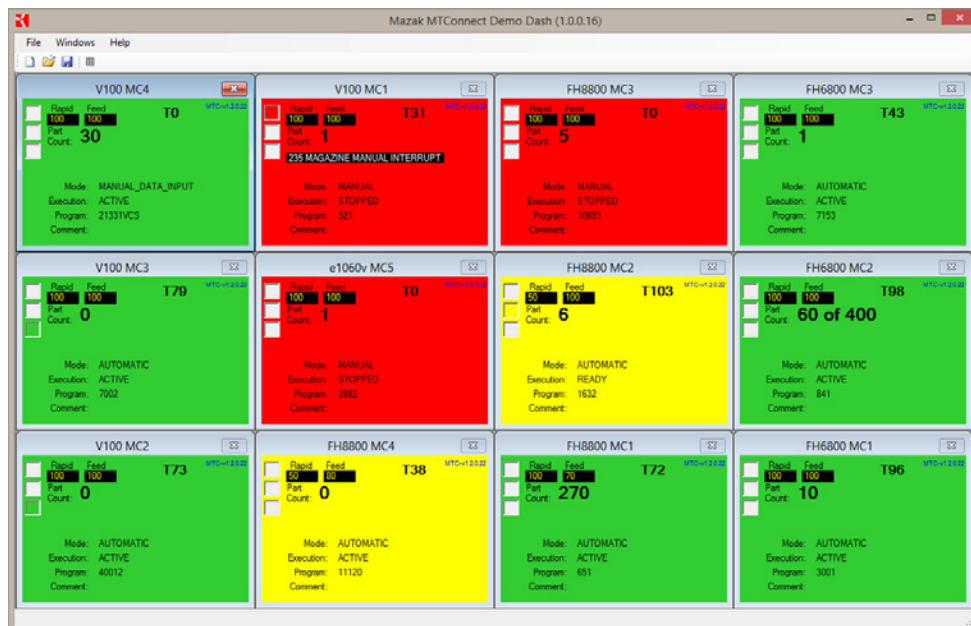
** Requires Windows 7 or later.*

Email mtconnect@mazakcorp.com for more information and your free copy.

Designed as a MTConnect start up package for shop floor level support. Operators and supervisors can see machine status with a quick glance. Color coding changes with Modes and Override levels.

This App does NOT do Calculations! Live snapshot of machine status only.

For a full working copy (license), you can request a quotation from pparts@mazakcorp.com.



Limitation for maximum # of machines is based on visibility of data and system resources.

Mazak USA Part# CCWMPD0610E

Sample MTConnect® Dashboard

DISCOVER MORE WITH
Mazak

The screenshot displays the Mazak MTConnect Demo Dash (1.0.0.16) interface. It features a grid of 24 machine status windows, each showing a color-coded status (Red, Yellow, Green), a 'Rapid' feed rate, a 'Part Count', and a 'TO' (Time Out) value. The machines listed include Press5, Laser3, VRX-800, V100-3, FH8800-1, Milacron ID, Press5, Laser2, V140n5x, V100-2, FH8800-3, Milacron OD, Press4, Laser1, e-500-2, V100-1, FH8800-2, Toyoda, Press3, FJV-60/120, e-500-1, e-1060v, FH8800-1, SHIGIYA GU-30B, Press2, FJV-35/60, VRX730, Press1, i-300S, and V100-4. A blue arrow points from the text 'Browse AGENT directly' to a web browser window showing an XML stream from 'http://172.26.81.154/current'. The XML data includes headers for 'MazakStreams:1.2' and 'MTConnectStreams:1.2', and a stream of data for 'MFMS6-MC3'.

Browse AGENT directly

Right click on a machine window to manage Settings and access useful tools for troubleshooting.

Save your machine list for easy access on future sessions and quick start up.

Requires "Execution" tag to function properly. (Available on all Mazak Adapters, but may not be available on 3rd party Adapters. However unlikely.)

The screenshot shows the 'MFMS6-MC2' settings dialog box. It contains the following fields and options:

- AGENT IP Address: 172.26.81.154
- AGENT Port: 5616
- DeviceName: MFMS6-MC2 (blank for Default)
- Machine Type: CNC (dropdown menu)
- ☐ Idle if no Spindle RPM
- Rapid Override Min: 100 (Sets Idle if lower)
- Feed Override Min: 100 (Sets Idle if lower)
- Target Part Count: 200
- Alias: e-500-2 (Display only)
- Buttons: OK, Cancel